

Asking Price £239,000

Jayman
www.jayman.co.uk

Estate Agents



Beacon Park Village.
Retirement Living

Lower Sandford Street

Lichfield, WS13 6JZ

Lower Sandford Street, Lichfield, WS13 6JZ

****Asking price is for 100% - 75% share is also available****

Jayman offer for sale this second floor retirement apartment at Beacon Park retirement village with a balcony.

Set in a delightful environment on the edge of Beacon Park and walking distance from the city centre.

Designed specifically for retired purchasers over the age of 60, this superb complex has an excellent range of facilities and with lifts for access to the apartments above. We are advised the service charge for this apartment is £746.41 per month.

The service charge includes part payment in utility bills. Content insurance, phone lines, WIFI is paid by the owner.

Entrance Hallway 11'2" x 8'0" (3.42 x 2.45)

Leading into all the rooms and storage cupboard. There is also intercom system.

Living room 17'2" x 10'7" (5.25 x 3.24)

Spacious living room with electric fireplace and French doors leading out onto the balcony.

Kitchen 17'9" x 7'11" (5.42 x 2.43)

Fitted kitchen with space for a breakfast table.

Bedroom 11'10" x 13'6" (3.63 x 4.14)

Double bedroom with fitted wardrobes.

Wet Room 11'8" x 8'0" (3.58 x 2.45)

With shower, WC and hand basin.

Lichfield

Located just north of Birmingham, Lichfield is a charming and historic Cathedral City known for its unique blend of heritage and contemporary living. With excellent transport links via both Lichfield City and Lichfield Trent Valley stations, commuting is effortless.

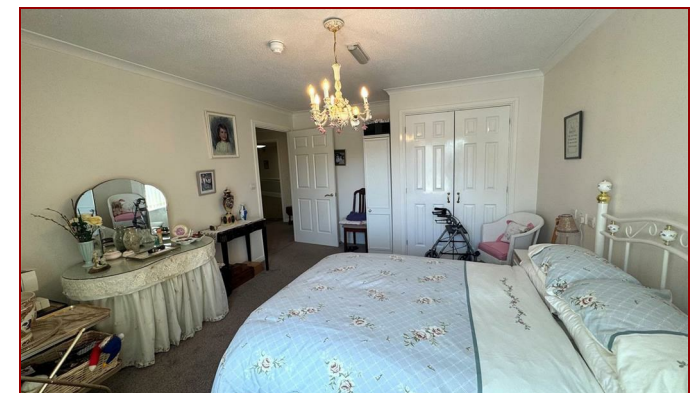
The city boasts an array of independent boutiques, bars, and restaurants, including the acclaimed Michelin-starred 'Upstairs by Tom Shepherd'. Lichfield also offers an impressive choice of primary and secondary schools, as well as a university campus, making it ideal for families, professionals, and investors alike.

Looking to sell your home?

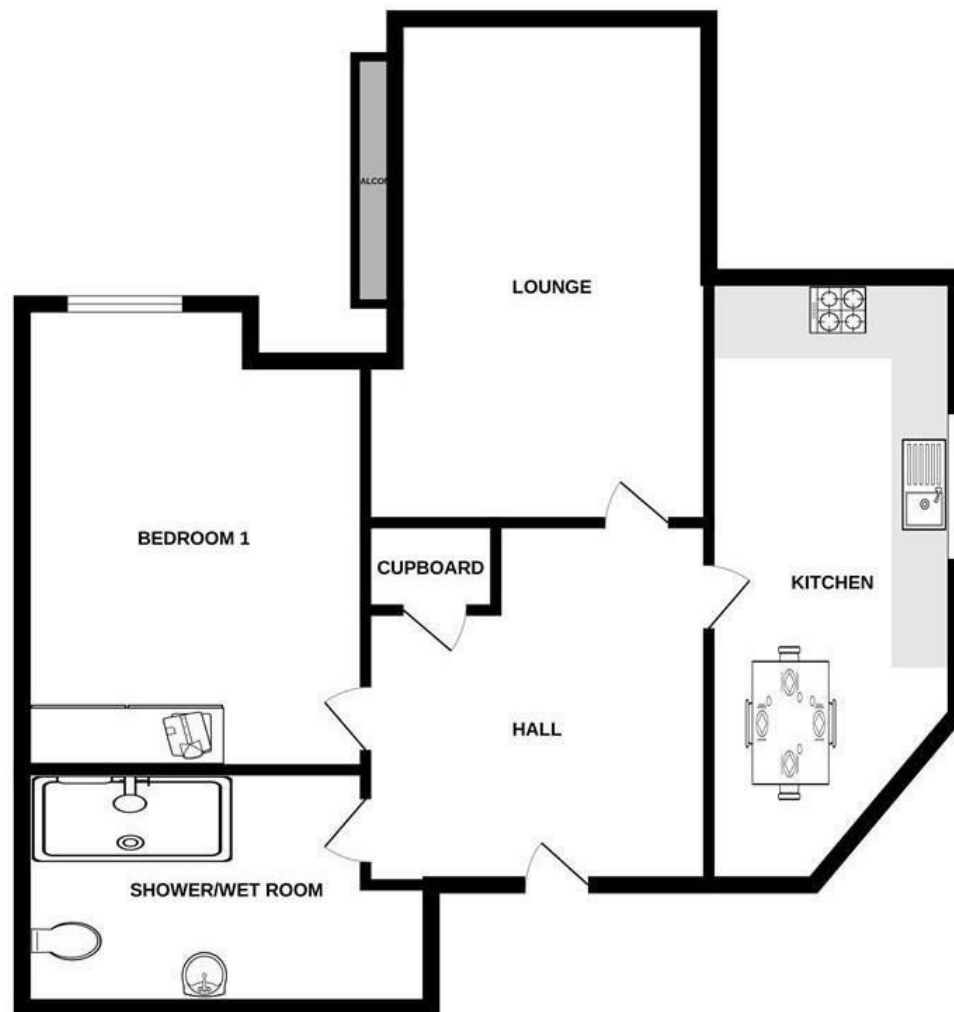
Our dedicated team is here to make the process smooth, stress-free, and successful.

We pride ourselves on exceptional customer service, guiding you every step of the way with clear communication, expert advice, and a personalized approach tailored to your needs.

Our top priority is to help you achieve the highest possible price for your property, using strategic marketing, local market expertise, and skilled negotiation. Trust us to deliver results with care, professionalism, and your best interests at heart. For a free valuation please contact us.

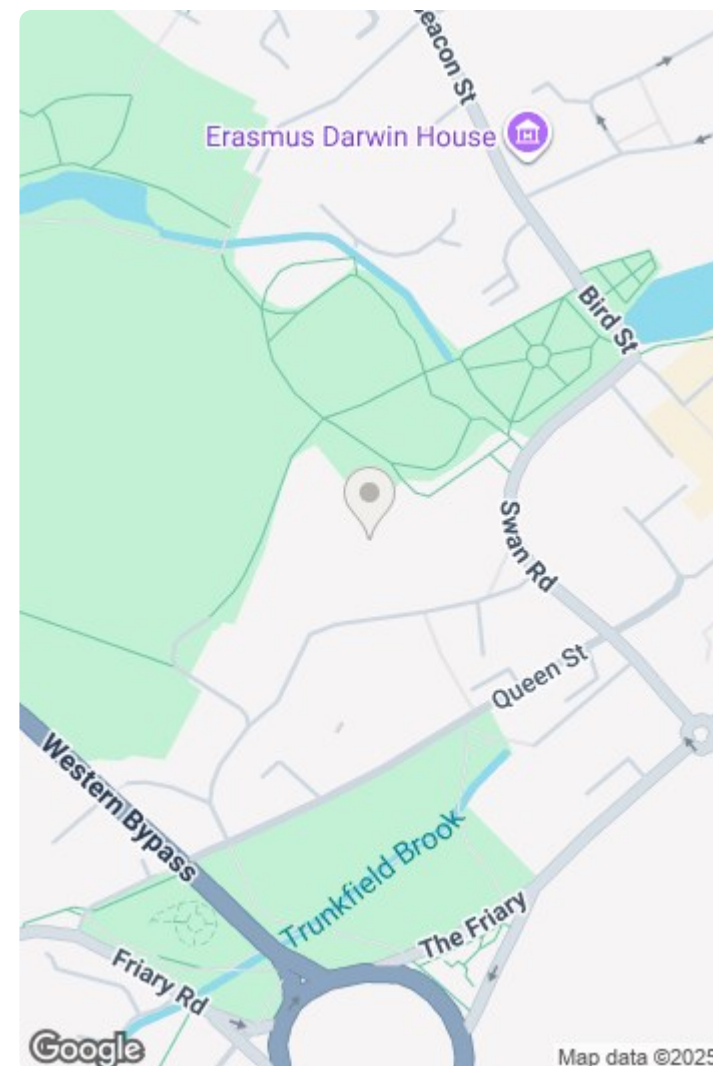


REQUIRE A MORTGAGE? Our independent advisor can compare "whole of market" to help find the best mortgage to suit your circumstances. Please call 01543 416 567 for a free mortgage quote including some deals only available through our network. **LEGAL CONVEYANCING** Jayman Conveyancing provides fast efficient low cost legal work with a no sale-no fee guarantee. Call 01543 416 567. **AGENTS DESCRIPTIONS** These details imply the opinion of the agent at the time these details were prepared and are subjective. It may be that the purchaser's opinion differs. **VIEWING ARRANGEMENTS** By appointment only with Jayman on 01543 416 567 **COUNCIL TAX** Please refer to www.voa.gov.uk for this information. **DESCRIPTIONS AND MEASUREMENTS** All measurements are approximate and some may be maximum on irregular walls. The plan shows the approximate layout of the rooms to show the inter relationship of relationship of one room to another but is not necessarily to scale. **CONSENTS** We have not had sight of any relevant building regulations, guarantees or planning consents and all relevant documentation pertaining to this property should be checked by your legal advisor before exchanging contracts.



1 BEDROOM, 1 BATHROOM, 2ND FLOOR APARTMENT

Whilst every attempt has been made to ensure the accuracy of the floorplan contained here, measurements of doors, windows, rooms and any other items are approximate and no responsibility is taken for any error, omission or mis-statement. This plan is for illustrative purposes only and should be used as such by any prospective purchaser. The services, systems and appliances shown have not been tested and no guarantee as to their operability or efficiency can be given.
Made with Metropix ©2025



Energy Efficiency Rating			Environmental Impact (CO ₂) Rating		
	Current	Potential		Current	Potential
Very energy efficient - lower running costs			Very environmentally friendly - lower CO ₂ emissions		
92-100 A			92-100 A		
81-91 B			81-91 B		
70-80 C			70-80 C		
59-69 D			59-69 D		
49-58 E			49-58 E		
39-48 F			39-48 F		
29-38 G			29-38 G		
1-28 G			1-28 G		
Not energy efficient - higher running costs			Not environmentally friendly - higher CO ₂ emissions		
England & Wales	EU Directive 2002/91/EC		England & Wales	EU Directive 2002/91/EC	

We endeavour to make our sales details accurate and reliable but they should not be relied on as statements or representations of fact and they do not constitute any part of an offer or contract. The seller does not make any representation or give any warranty in relation to the property and we have no authority to do so on behalf of the seller. Services, fittings and equipment referred to in the sales details have not been tested (unless otherwise stated) and no warranty can be given as to their condition. We would strongly recommend that all information, which we provide, about the property is verified by yourself or your advisers.

